

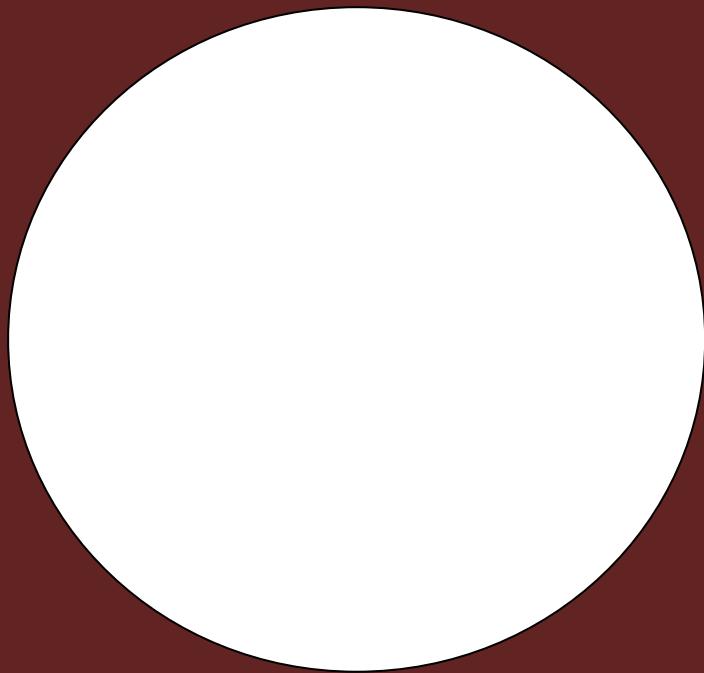
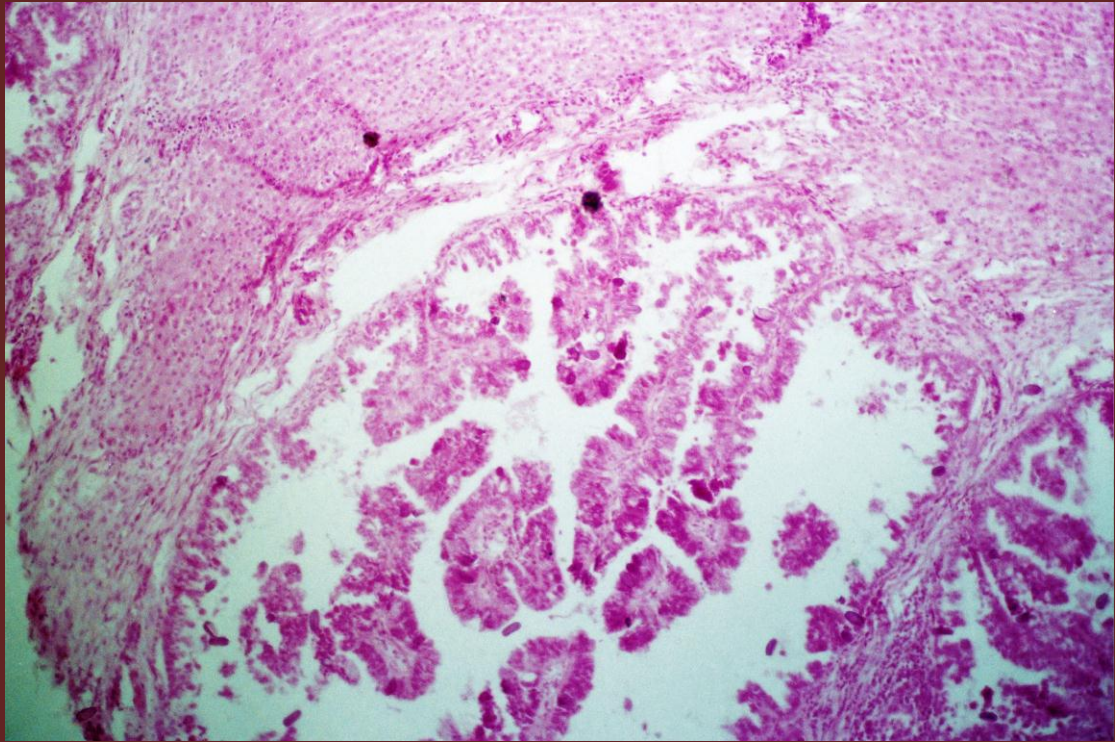
Organ: Liver

Stain: H & E

Lesion: Hyperplasia of the bile duct (hepatic coccidiosis)

Microscopical findings:

1. The bile ducts are lined with more than one layer of the epithelial cells.
2. The epithelium is folded in the lumen of the bile duct and form papillary like projections similar to intestinal villi.
3. The hyperplastic epithelium shows presence of different stages of Eimeria within their cytoplasm.



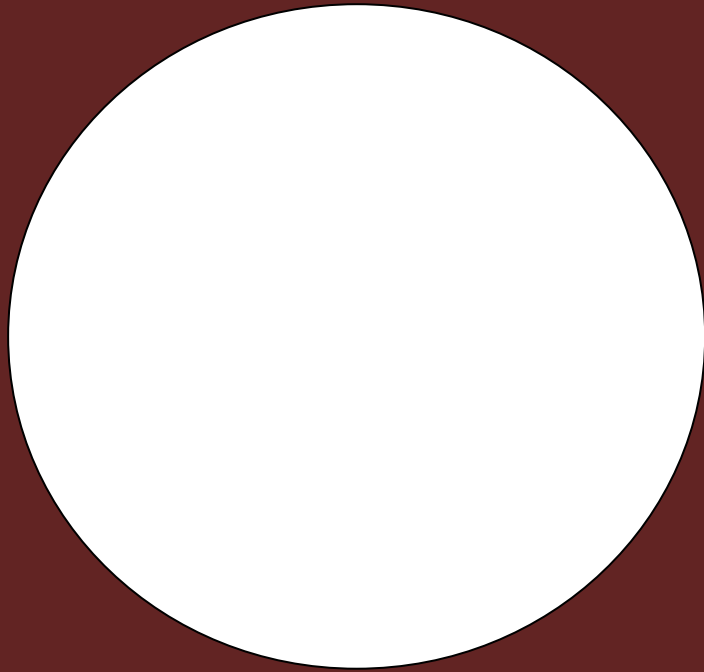
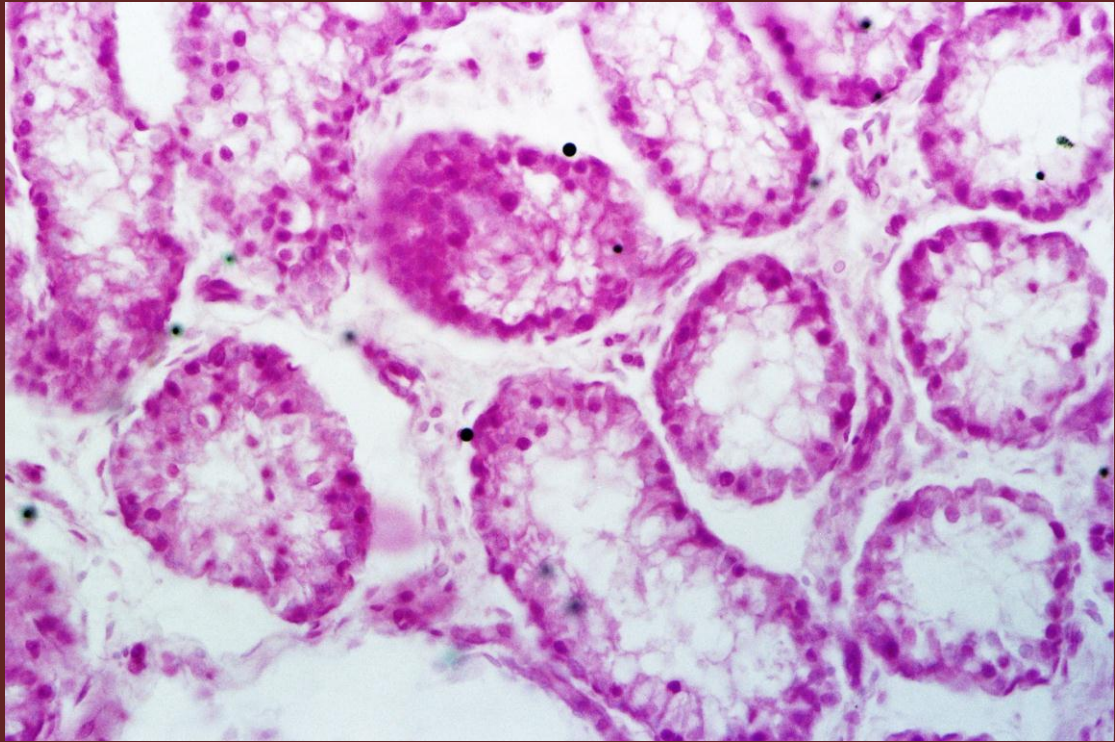
Organ: testes

Stain: H & E

Lesion: Hypoplasia

Microscopical findings:

1. The seminiferous tubules are rudimentary and have no spermatozoa in their lumens.
2. The tubules are lined by one or two cell layers.
3. The basement membrane of these tubules are thickened and corrugated.
4. The interstitial cells and Leydig cells are numerous.



Organ: Lung

Stain: H & E

Lesion: Metaplasia

Microscopical findings:

1. The lining columnar epithelium of the bronchiole is transformed into keratinized stratified squamous epithelium.

